

Anti-H_ACVR2B hIgG1 Reference Antibody(Bimbio)

Product Information

| | |
|------------------------|---|
| Product Name | Anti-H_ACVR2B hIgG1 Reference Antibody(Bimbio) |
| Storage temp. | Store at 2-8°C short term (1-2 weeks).Store at ≤ -20°C long term. Avoid repeated freeze-thaw. |
| Catalog# / Size | GM-86367MAB-1mg / 1 mg GM-86367MAB-5mg / 5 mg GM-86367MAB-25mg / 25 mg GM-86367MAB-50mg / 50 mg GM-86367MAB-100mg / 100 mg |

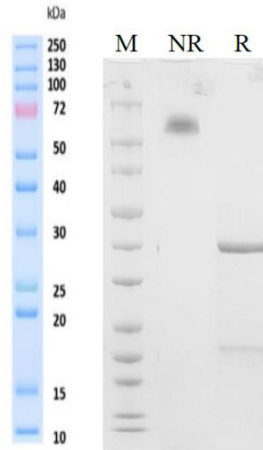
Antibody Information

| | |
|--------------------------|--|
| Expression System | CHO |
| Aggregation | < 5% as determined by SEC-HPLC |
| Purity | > 95% as determined by SDS-PAGE |
| Endotoxin | < 1 EU/mg, determined by LAL gel clotting assay |
| Sterility | 0.2 μm Filtered |
| Target | ACVR2B |
| Clone | Bimagrumab |
| Alternative Names | BYM338, ACVR2B (activin A receptor type 2B, ActR-IIB, ActRIIB) |
| Source/Isotype | Monoclonal Human IgG1(REEM), Kappa |
| Application | ELISA; Flow Cytometry |
| Description | ACVR2B (Activin A receptor type IIB) is an important cell membrane receptor protein belonging to the TGF-β receptor family, playing a key role in regulating cell growth, proliferation, and differentiation processes. The function of ACVR2B is closely related to its interaction with other signaling proteins such as Activin and Myostatin. By regulating the phosphorylation level of Smad proteins and activating other signaling pathways, ACVR2B can influence the fate and function of cells. |
| Formulation | Phosphate-buffered solution, pH 7.2. |

Version:1.1 Revision Date:03/07/2024

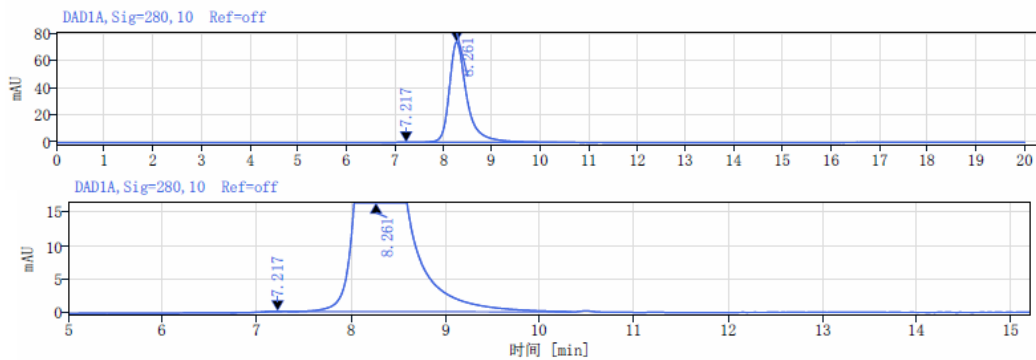
Data Examples

SDS-PAGE



On SDS-PAGE under reducing (R)/non-reducing(N-R) condition. The gel was stained overnight with Coomassie Blue. The purity of the protein is greater than 95%.

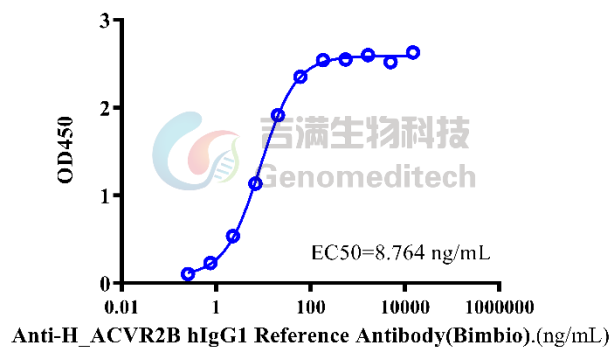
SEC-HPLC



The purity of this product is more than 95% verified by SEC-HPLC

Indirect ELISA

Anti-H_ACVR2B hIgG1 Reference Antibody(Bimbio), ELISA
0.5 μ g Human ACVR2B Protein; His Tag of per well

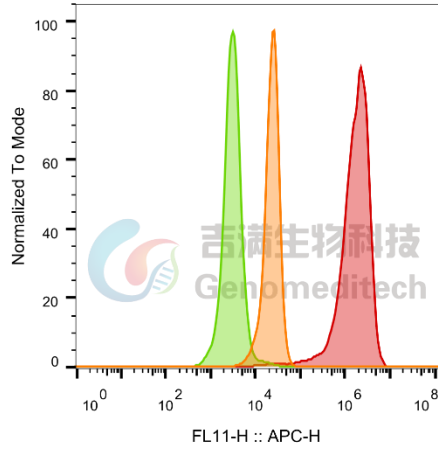


Human ACVR2B Protein; His Tag (Catalog # GM-84198RP) was immobilized at 5 μ g/ml (100 μ L/well). Increasing concentrations of Anti-H_ACVR2B hIgG1 Reference Antibody(Bimbio) (Catalog # GM-86367MAB) were added.

Version:1.1 Revision Date:03/07/2024

Flow cytometry

The recommended usage range is 0.5-4 µg per test. H_ACVR2B HEK-293(ACVR2A KO) Cell Line (Catalog # GM-C34942) was stained with Anti-H_ACVR2B hlgG1 Reference Antibody(Bimbio) (Catalog # GM-86367MAB) or isotype control antibody, followed by anti-Human IgG APC-conjugated Secondary Antibody.



| SampleID | Geometric Mean : FL11-H |
|---|-------------------------|
| HEK-293 anti-ACVR2B+APC-2nd Ab | 22816 |
| HEK-293 H_ACVR2B H_IgG+APC-2nd Ab | 3138 |
| HEK-293 H_ACVR2B anti-ACVR2B+APC-2nd Ab | 1.52E6 |